


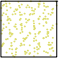
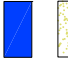


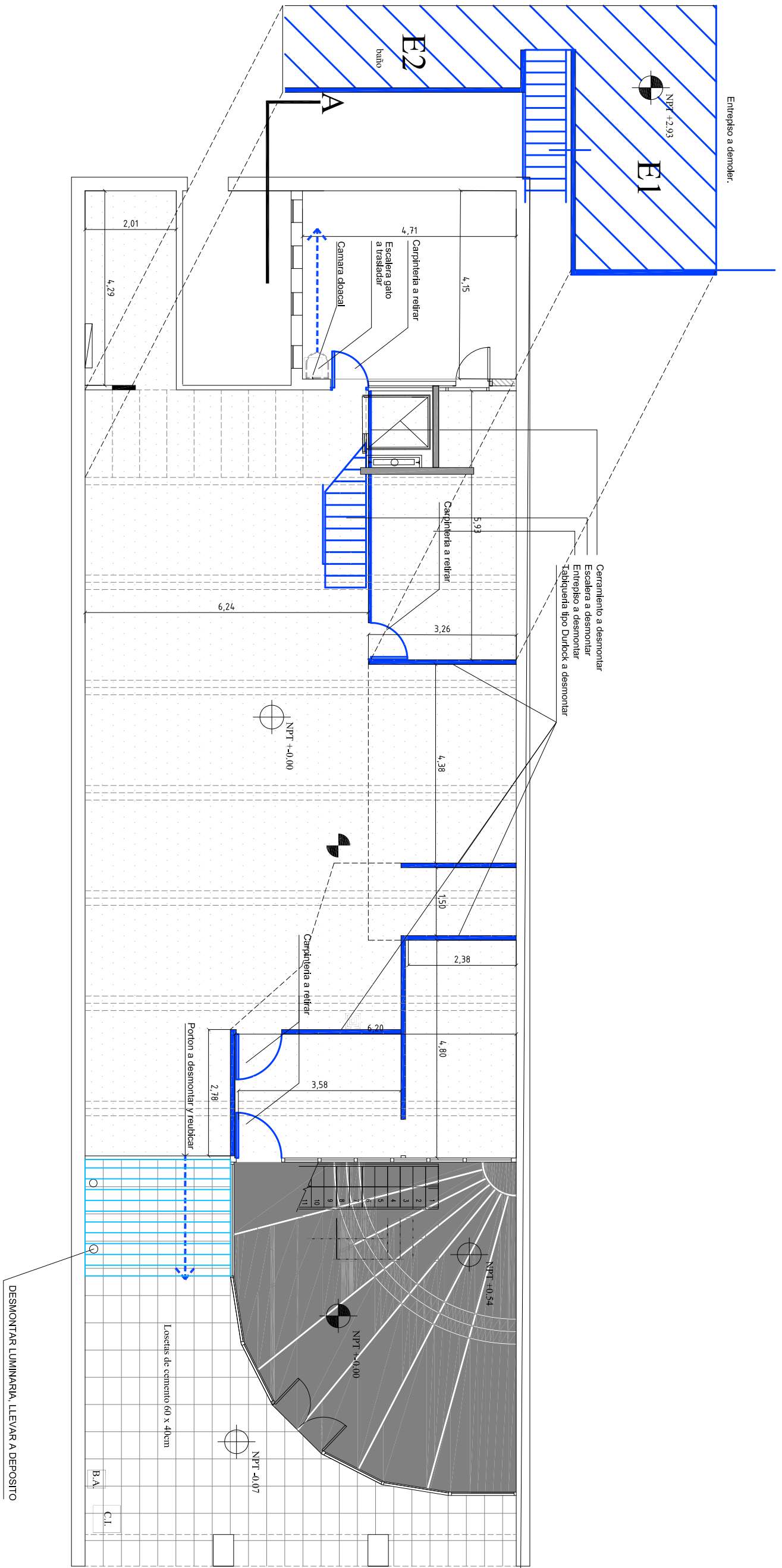


- REFERENCIAS
-  DESMONTAR PISO CEMENTO Y ZOCALOS
 -  DESMONTAR BALDOSAS
 -  DESMONTAR PISO CEMENTO ALISADO Y ZOCALOS
 -  DESMONTAR ALFOMBRA Y ZOCALOS
 -  A DEMOLER O DESMONTAR
 -  PUERTA PLACA REUTILIZADA
 -  PANOS FIJOS REUTILIZADOS



NOTA: TODAS LAS MEDIDAS DEBERAN SER VERIFICADAS EN OBRA.

OFICINA DE INFRAESTRUCTURA
DEPARTAMENTO DE SERVICIOS GENERALES

FEBRERO 2018

EDIFICIO COCHABAMBA 120
DEMOLICION
PLANTA BAJA

D-1.1
ESC. 1:100